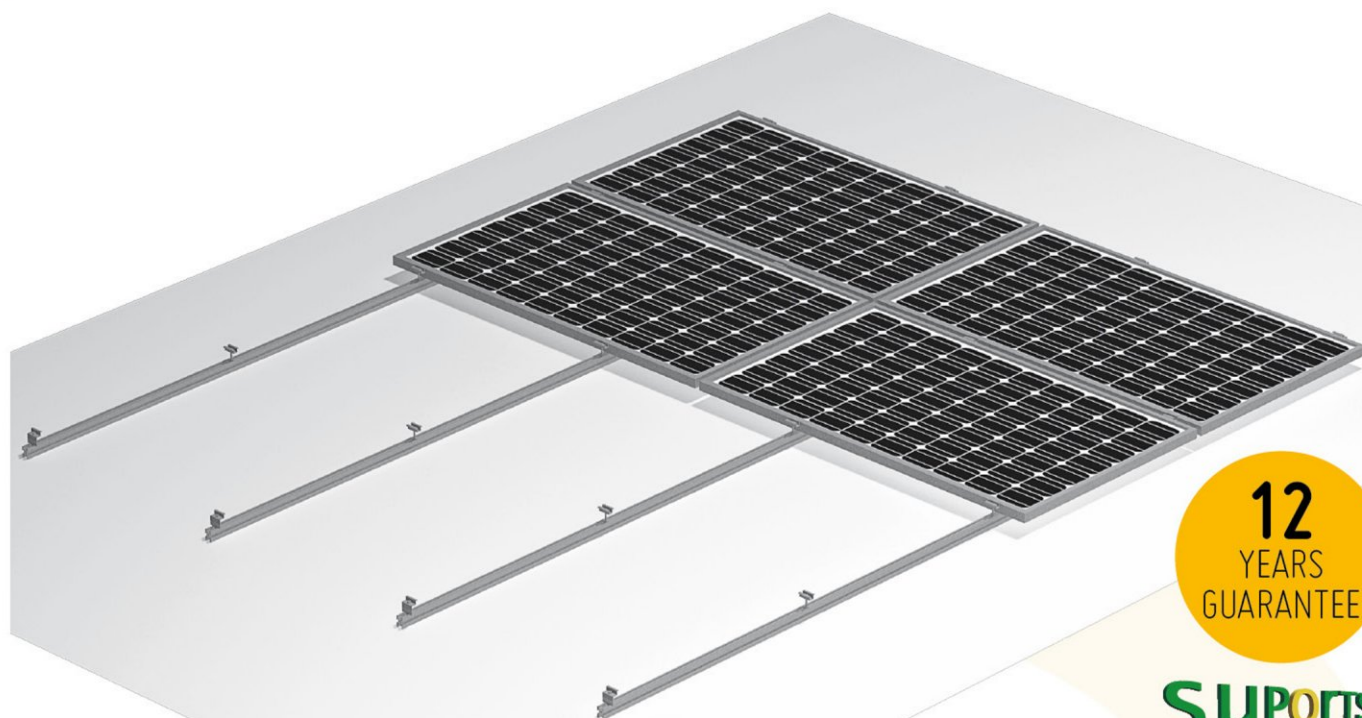
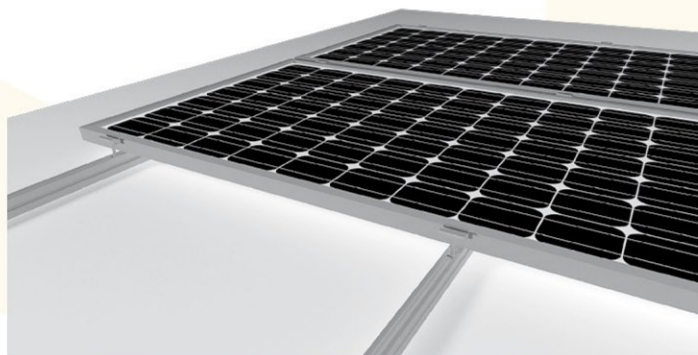


PLAIN SYSTEM-BASIC



The BASIC system is an easy and cheap solution for solar mounting systems among the plain systems. Only one type of mounting rail is needed; on two of these mounting rails every module is fixed with fasteners, either vertically or horizontally. For the anchorage of the mounting rails we dispose of many accessories (self-tapping screws, roof hooks, fittings for all kind of roofs etc.); so we have a solution for every roof!

● SOLAR MOUNTING SYSTEMS



PERSPECTIVE VIEW

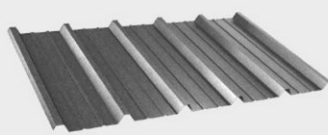
● SYSTEM FEATURES

Aluminium profiles for solar modules with custom lengths for every distance between the fittings.
Stainless steel screws.
Fittings and accessories.
Sealings (Neoprene, EPDM, chemical dowel)

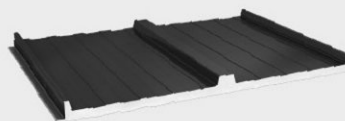
● ON ROOF-TOP APPLICATION



ROOF TILE

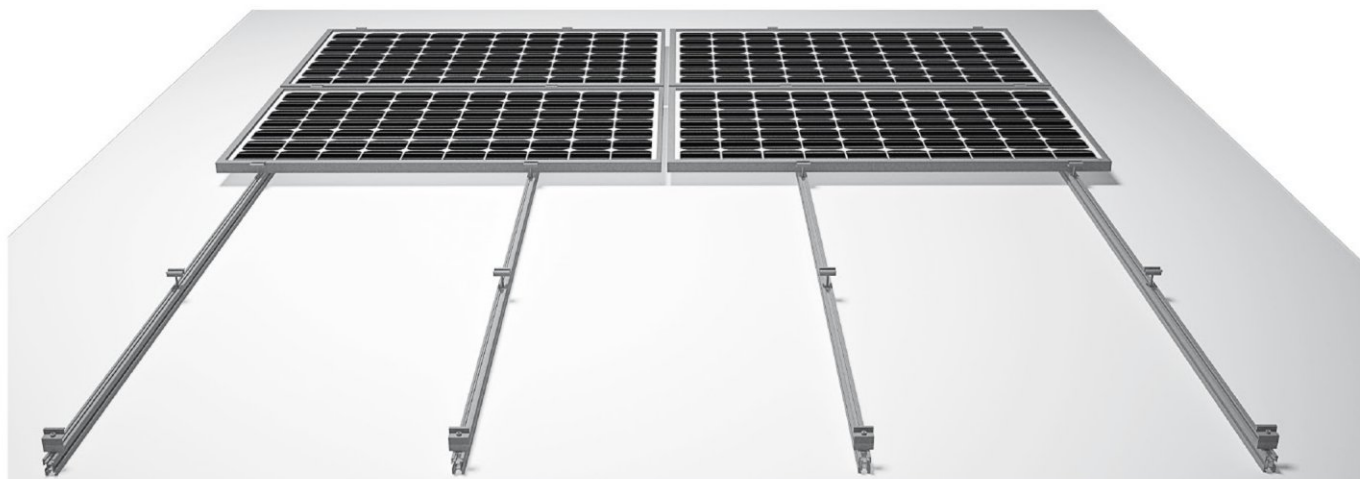


PROFIED METAL SHEETING

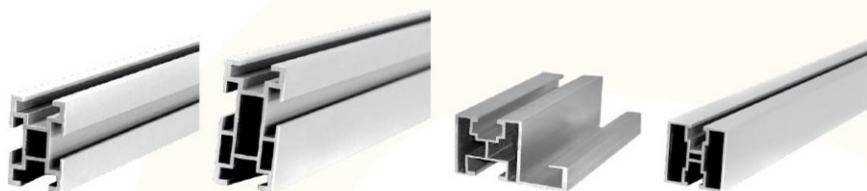


SANDWICH PANEL

PLAIN SYSTEM-BASIC



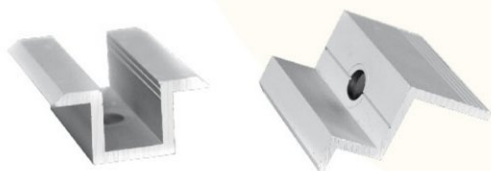
PROFILES



INTERFACES



FASTENERS



SCREWS



SEALINGS



FITTINGS



APPLICATIONS

All types and sizes of modules, also for solar thermal collectors. For all kinds of buildings and roofs. Inclination : 0° (in parallel to roof).

ADVANTAGES

Longevity.
Lightness.
Resistivity.
Ease of installation.
Quick installation.
Leak tightness.
Simple solutions.
Multivalent profiles.

MATERIAL

Aluminium profiles.
Stainless steel screws.
EPDM-sealing.
Stainless steel fittings.

STANDARDS

CTE.
EN.

PROCUREMENT

Quick delivery.
Delivery to works or warehouse.
Individual, detailed plans and lists included.
After-sales service.
Technical support.

Warranty

12 years.